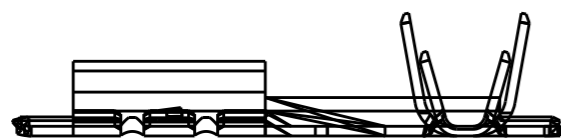
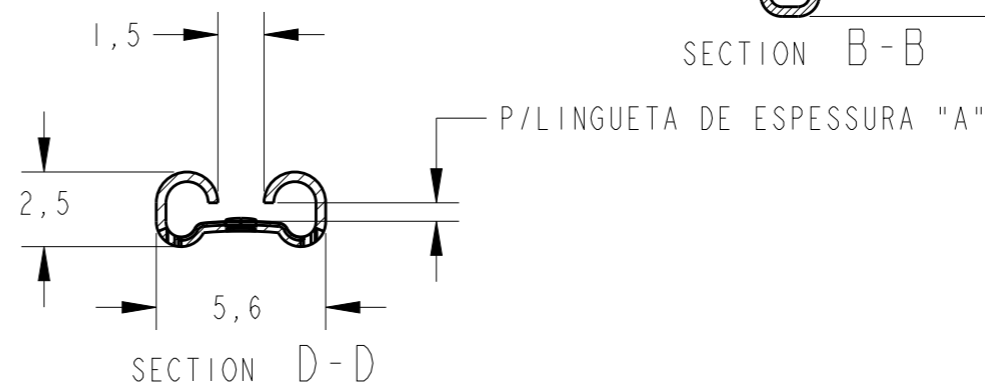
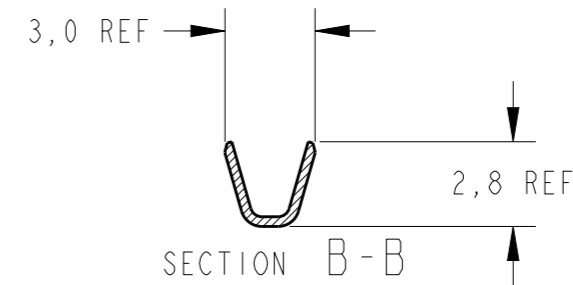
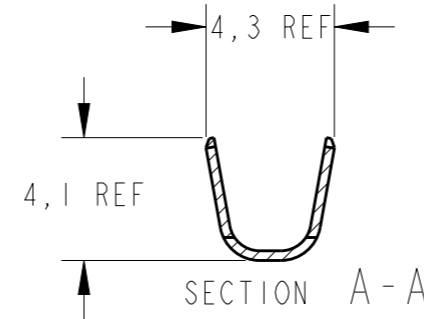
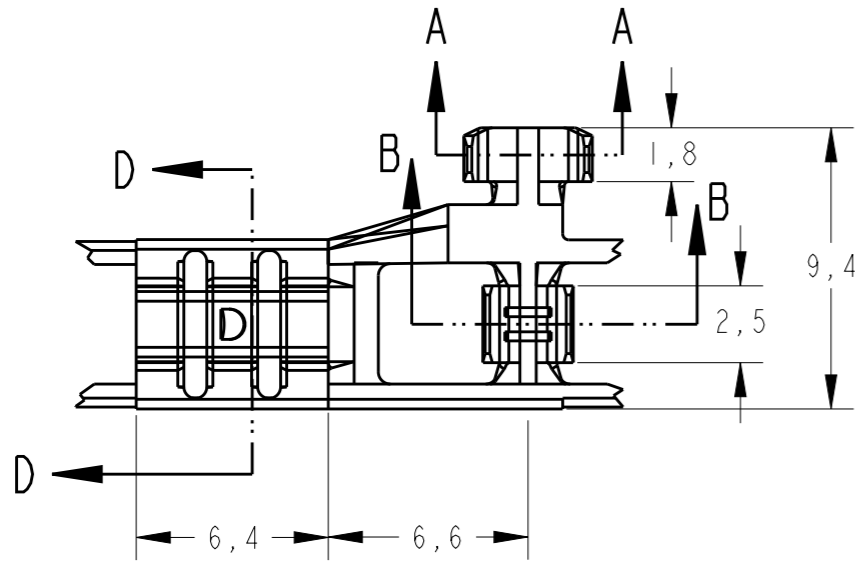



THIS DRAWING IS UNPUBLISHED. RELEASED FOR PUBLICATION 20
 © COPYRIGHT 20 BY - ALL RIGHTS RESERVED.

LOC	DIST	REVISIONS					
AP	-	P	LTR	DESCRIPTION	DATE	DWN	APVD
			L	REV. BY ECO-08-013701	03JUNE08	HC	WLS
			LI	REV. BY ECO 15-002218	02FEB2015	HC	WLS



OBSOLETE	0,8	626413-7	ESTANHADO	BRONZE FOSF.	626412-7
OBSOLETE	0,5	626413-6	-	BRONZE FOSF.	626412-6
OBSOLETE	0,8	626413-5	-	BRONZE FOSF.	626412-5
-	0,8	626413-4	ESTANHADO	LATÃO	626412-4
-	0,8	626413-3	-	LATÃO	626412-3
-	0,5	626413-2	ESTANHADO	LATÃO	626412-2
-	0,5	626413-1	-	LATÃO	626412-1
	ESPESSURA "A"	LOOSE PIECE PN	FINISH	MATERIAL	PART NUMBER

THIS DRAWING IS A CONTROLLED DOCUMENT.

DWN H.C. CANTERI 12FEB2003	 TE Connectivity .187 FLAG FASTON RECEP.
CHK W.L. STEFANI 12FEB2003	
APVD H.C. CANTERI 12FEB2003	
PRODUCT SPEC	
DIMENSIONS: mm	NAME
TOLERANCES UNLESS OTHERWISE SPECIFIED: 0 PLC ±0,4 1 PLC ±0,4 2 PLC ±0,4 3 PLC ±0,4 4 PLC ±0,4 ANGLES ±1° FINISH -	SIZE CAGE CODE DRAWING NO RESTRICTED TO A3 00779 C=626412
WIRE RANGE 20/16AWG	Customer Drawing
INS. DIA RANGE 2,3/3,3mm	SCALE 4/1 SHEET 1 OF 1 REV LI